



Scan the barcode with your Smart-Phone app and view the latest publication of this document

Series EZ9 Ball Valves

Three-Piece Ball Valve, Full Port
Sizes 1/4" ~ 2"



The SVF Series EZ9 valves are designed for superior performance in general purpose, plant-wide applications. The direct-mount feature reduces the size and weight of traditional automated valves. EZ9 features live-loaded stem seals to provide superior performance in high cycle applications.

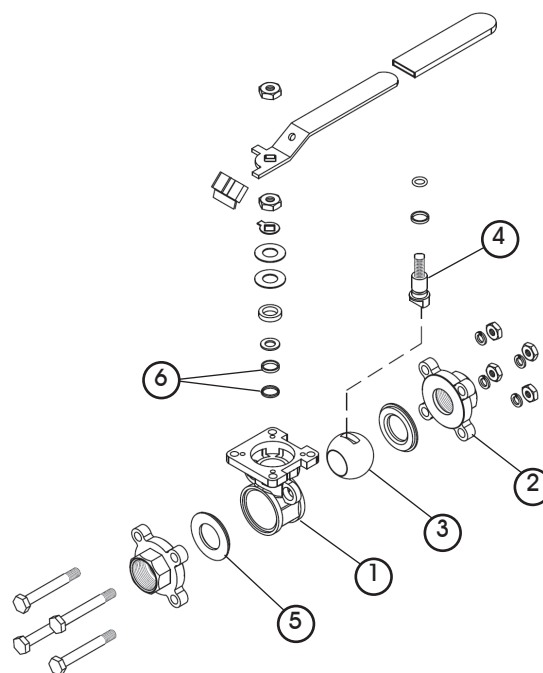
SERIES EZ9 DESIGN FEATURES

- ✓ Designed & built for economical performance
- ✓ Pressure rated for 1,000 WOG
- ✓ Socket weld complies with ANSI B16.11
- ✓ Full Port flow path for maximum flow
- ✓ Built-In ISO 5211 direct mounting pad for easy automation
- ✓ End connections include SE (Screwed Ends, FNPT), SW (Socket Weld) and BW (Butt Weld)
- ✓ Weld ended carbon steel valves supplied with stainless steel bodies
- ✓ Three-piece "swing out" design offers easy access for in-line maintenance
- ✓ Blowout proof stem adds safety & reliability
- ✓ Lockable in the "Open" or "Closed" position



MATERIALS OF CONSTRUCTION

ITEM	DESCRIPTION	MATERIALS SPECIFICATIONS (Additional options available)
1	Body	316 Stainless Steel (ASTM A351 CF8M)
2	End Connector	316 Stainless Steel (ASTM A351 CF3M) Carbon Steel (ASTM A216 WCB)
3	Ball	316 Stainless Steel
4	Stem	316 Stainless Steel
5	Seat/Body Seal (One Piece)	TFM1600™
6	Stem Seal	RTFE



SERIES "EZ" FOR AUTOMATION

EZ9 valves feature direct mounting for pneumatic or electric automation. This feature reduces the cost and additional size and weight of valves requiring a mounting adapter kit. See "aeroValve" and "ElectroValve"



What do you need today?™

HIGH PURITY VALVES
CleanFLOW
CleanFLOWValves.net

PRO-SPEC
PROCESS SPECIFIC
WWW.PRO-SPEC.NET

QUALITY FLOWS THROUGH US

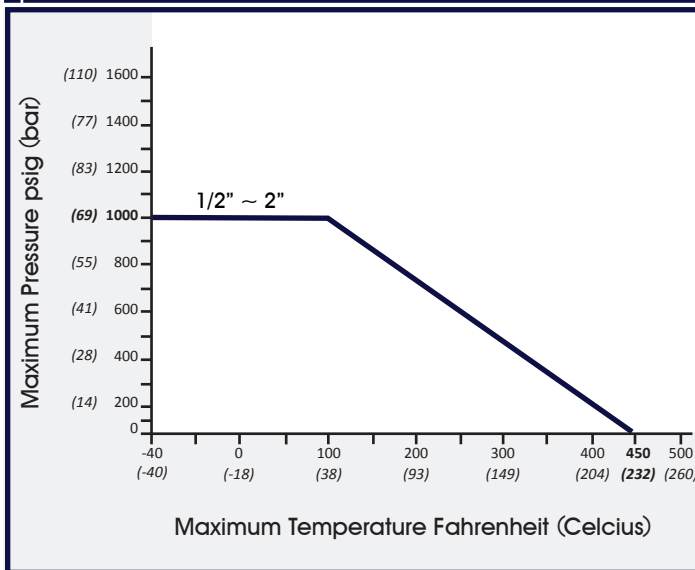
Three-Piece Ball Valve, Full Port, Sizes 1/4" ~ 2"



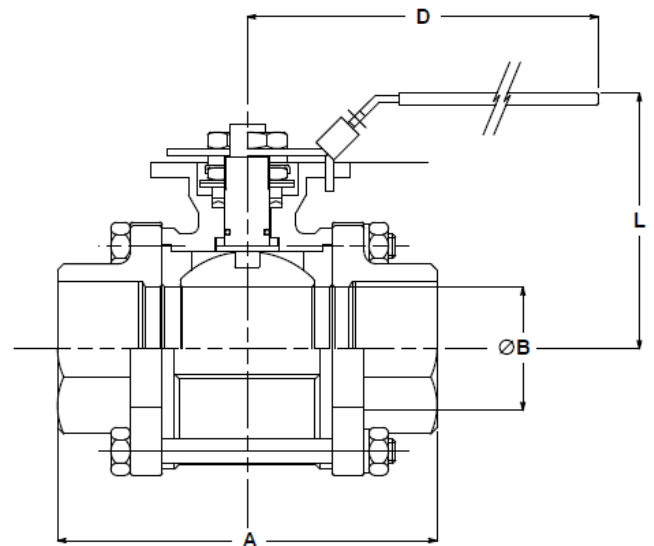
DIMENSIONS, WEIGHT, CV, TORQUE

Size	A		B		D		L		Weight.		Cv	Torque*	
	in.	mm	in.	mm	in.	mm	in.	mm	lbs	kg		in-lbf	Nm
1/4"	2.50	64	0.59	15	4.41	112	2.9	74	1.5	0.7	12	35	4
1/2"	2.50	64	0.59	15	4.41	112	2.9	74	1.5	0.7	12	35	4
3/4"	2.85	72	0.79	20	4.41	112	3.2	81	1.8	0.8	32	50	6
1"	3.19	81	1.00	25	5.35	136	3.6	91	2.4	1.0	57	80	9
1-1/4"	3.72	94	1.25	32	7.28	185	3.9	99	3.6	1.6	80	120	14
1-1/2"	4.25	108	1.50	38	7.79	198	4.6	117	5.6	2.5	104	250	28
2"	4.78	121	2.00	51	7.79	198	4.9	124	8.2	3.7	240	300	34

EZ9 -PRESSURE/TEMPERATURE CHART



* At full differential pressure for clean fluids with TFM1600™ Seats



HOW TO ORDER SERIES EZ9 BALL VALVES

SERIES	END MATERIAL	BODY MATERIAL	SEAT & BODY SEAL	ENDS	SIZE
EZ9	4 = Carbon Steel ASTM A216 WCB (BW & SW Ends Only)	6 = 316 Stainless Steel ASTM A351 CF8M With Stainless Steel Ball & Stem	AT = TFM1600™ (One Piece)	SE = Screwed Ends (FNPT) On Stainless Steel Valves BW = Butt Weld Ends SW = Socket Weld Ends	02 = 1/4" 12 = 1-1/4"
	6 = 316L Stainless Steel ASTM A351 CF3M (SE, BW, SW Ends)				05 = 1/2" 15 = 1-1/2"
					07 = 3/4" 20 = 2"
					10 = 1"
Order Example: (EZ966ATSE05)					
Example Description: Stainless Steel Ends & Body, Stainless Steel Ball & Stem, TFM1600™ One Piece Seat & Body Seal, Screwed Ends (FNPT), 1/2" Size					
EZ9	6	6	AT	SE	05

Subject to revision. Please visit www.SVF.net for the latest updates on this Data Sheet. All Data Sheets posted on our website supersede all prior publications. • [Document #DDS-EZ9-04/2010 • Series EZ9 Data Sheet - 07/12/2012]